

FISHWAY STATUS REPORT

Date: 12/21/2013
Inspection Period: 12/15 thru 12/21/2013

All JD Fishways are inspected once per day during winter season;
 frequent monitoring of the PLC displays in SMF Fisheries Office as necessary.



**US Army Corps
of Engineers**
Portland District

JOHN DAY DAM
 JD/WC Project-Fisheries
 P.O. Box 823
 Rufus, Oregon 97050
 Phone: 541-506-7860

John Day Dam	Inspections	Criteria	Total Number of Inspections:	7	Temperature:	40.9 F
	Out of Criteria	Limit				
NORTH FISHWAY			Returned to regular service as planned on 12/19; meeting the optimal FPP criteria			
Exit differential	0	≤ 0.5'				
Exit Control weirs	0	High setting	High setting is normal for JDN			
Count station differential	0	≤ 0.3'				
Weir crest depth	0	1.0' ± 0.1'				
Entrance differential	0	1.0' - 2.0'	AVG	0.0		
SOUTH FISHWAY			In regular service with all three AWS turbines working properly			
Exit differential	0	≤ 0.5'				
Exit Control weirs	0	MID setting	MID is normal for JDS			
Count station differential	0	≤ 0.3'				
Weir crest depth	0	1.0' ± 0.1'				
South entrance differential	0	1.0' - 2.0'	AVG	1.3		
Entrance weir SE1	0	depth (≥ 8')	AVG	8.8		
Collection channel velocity	0	1.5 - 4 fps	AVG	3.12		
Bay 1 differential	0	1.0' - 2.0'	AVG	1.7		
N. Entrance PH(Bay 19)differential	0	1.0' - 2.0'	AVG	1.3		
Entrance weir NE1	0	depth (≥ 8')	AVG	8.6		
Entrance weir NE2	0	depth (≥ 8')	AVG	8.7		
JUVENILE PASSAGE			All STSs pulled from MU gatewell slots 16 - 19 December			
Forebay/bypass conduit differential	0	4.0' - 5.0'	AVG	4.1	1/3 of orifices open started on 12/20	
Submersible traveling screens	0	visual inspect	All screens removed for the season by 19 December			
Turbine trashrack drawdown	0	<1.5', wkly				
Vert barrier screen drawdown	0	<1.5', wkly				
Spill volume	0	n/a				
Spill pattern	0	n/a				
Turbine Unit Priority	0	per FPP	MU priority without TSWs requires only units 1-4 in service			
Turbine 1% Efficiency	0	per FPP				

SMOLT MONITORING FACILITY

Operation: SMF was successfully dewatered on 12/17 after JD Mechanics fixed the crest gate's lifting mechanism. Complete winterization of flushing water pipes and valves underway.

Debris: N/A

Maintenance:

SMF building / wet lab OOS and winterized by JD Fisheries.

SMF CCTV replacement is in planning stage; on hold due to lack of funding. Likely implementation soon.

Research: None

Fallbacks: AVG: 0 MAX: 0 MIN: 0

OTHER ISSUES:**JOHN DAY**

Birds: See Avian tabs.

122 avian lines are properly installed. Four lines are currently missing; spillway/TSW line broke on 4/12/13. JD Management preparing a plan for the missing lines' replacement before 2014 passage season.

Operations:

JD North Fishway returned to regular service on 12/19 and it has been meeting the optimal FPP criteria since.

JD South Fishway in service, meeting the optimal FPP criteria with all three AWS turbines. Its dewatering scheduled for 7 January '14.

All STSs were removed from MU gatewells for winter maintenance by 19 December. JBS started 1/3 open orifices rotation schedule on 12/20.

JBS collection channel is scheduled for dewatering/ inspection in early February 2014.

Maintenance:

Calibration: 12/8/2013 All JD Fishways' PLCs/ water level sensors were within 0.3' margin of error.

Research:

Fish counting at both JD Fishways ended 10/31. Video counting began 11/1 and will continue through the winter.

Adult Salmonids Radio telemetry evaluations are ongoing at both JD adult fishway. University of Idaho crew is in charge of detecting of all adult adult salmonids, which were first tagged at Bonneville Dam.

Glen A. Smith PE

OPM John Day/Willow Creek Project

Date:___ 13-Jan-14

2007-2013 Water Temps JDA w/ 12yr avg



JDA COLLECTION CHANNEL VELOCITY

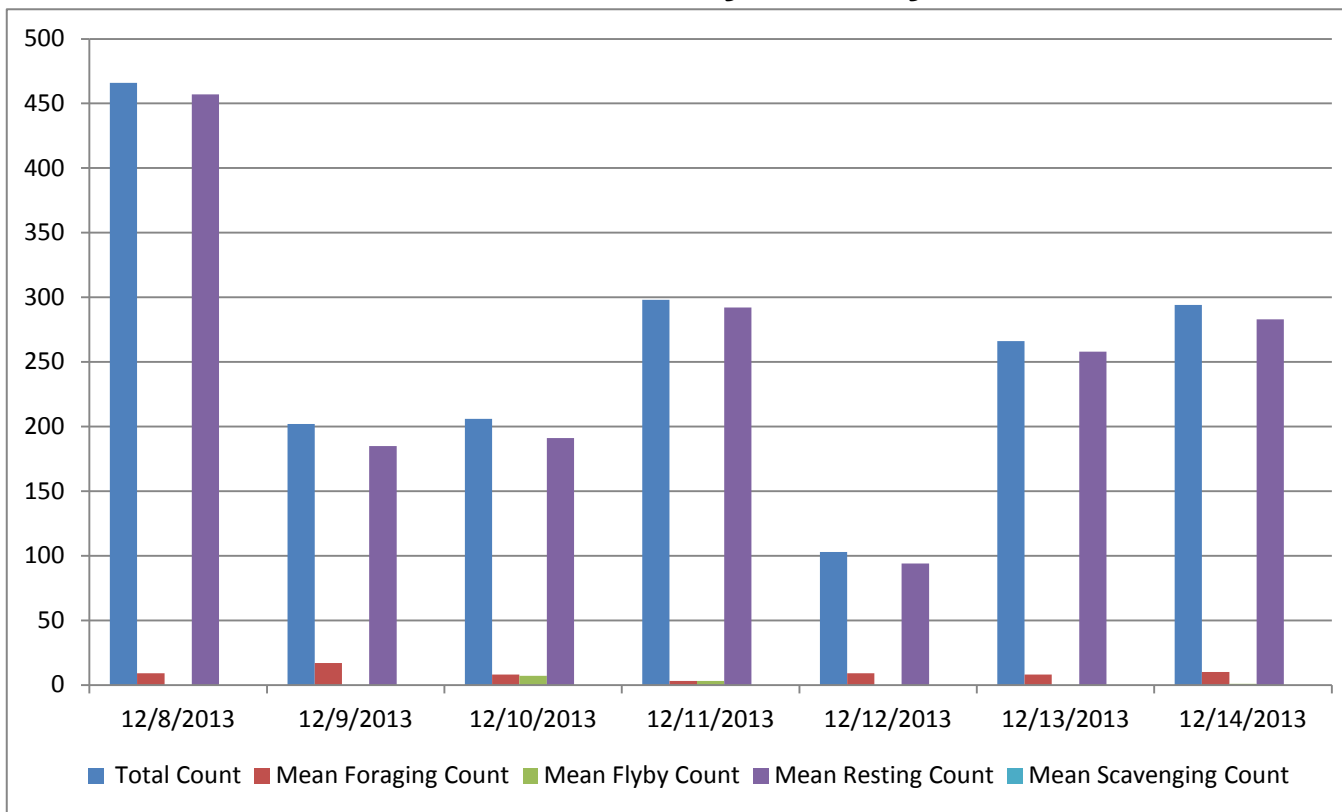
Date 21-Dec-13

By: pk

Bay(s)	Time	Sec.	Velocity (f/s)
0-2	0:01:23	83	2.17
2 - 4	0:02:20	140	3.16
4 - 6	0:03:16	196	3.21
6 - 8	0:04:14	254	3.10
8 - 10	0:05:10	310	3.21
10 - 12	0:06:10	370	3.00
12 - 14	0:07:17	437	2.69
14 - 16	0:08:13	493	3.21
16 - 18	0:08:55	535	4.29

3.12

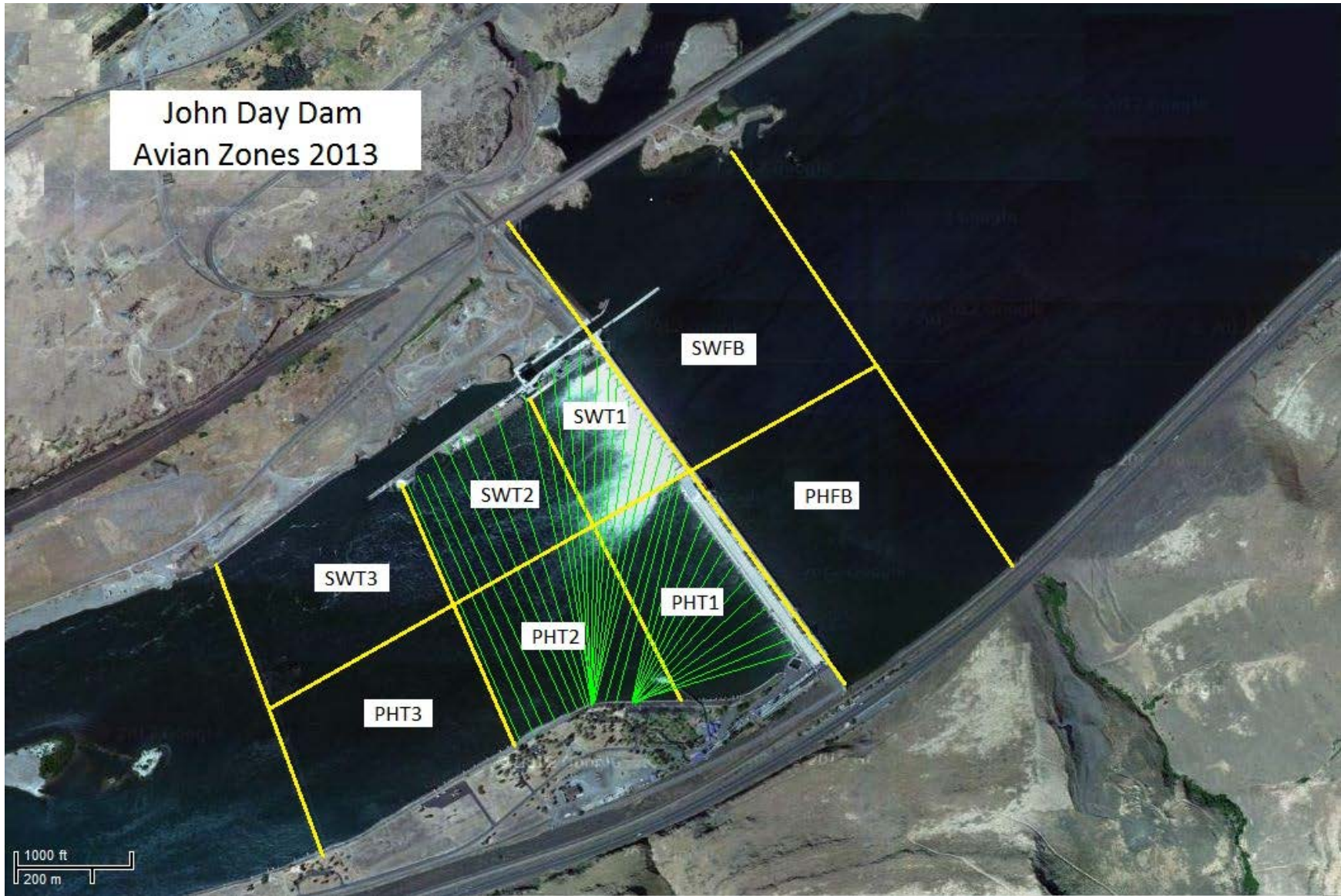
Bird Count by Activity



Date	Total Count	Mean Foraging Count	Mean Flyby Count	Mean Resting Count	Mean Scavenging Count
12/8/2013	466	9		457	
12/9/2013	202	17		185	
12/10/2013	206	8	7	191	
12/11/2013	298	3	3	292	
12/12/2013	103	9	0	94	
12/13/2013	266	8	0	258	
12/14/2013	294	10	1	283	

**Seasonal High numbers of GULLS
in the Forebay and on the WING WALL.**

John Day Dam
Avian Zones 2013



John Day:

	Temp:	Secchi:	Fallbacks
Sun	41	5.5	
Mon	44	5.0	
Tues	41	5.0	
Wed	40	5.0	
Thur	40	5.0	
Fri	40	6.0	
Sat	40	6.0	
AVG:	40.9	5.4	AVG
			MAX
			MIN

	NE1	NE2	S.Ent	SE1	N.Ent	JBS Diff	Bay1	Bay19
Sun	8.0	8.6	1.5	8.4	oos	4.6	1.9	1.2
Sun								
Mon	8.4	8.4	1.3	8.4	oos	4.5	1.9	1.5
Mon								
Tues	8.9	8.9	1.3	8.5	rts	4.5	1.8	1.4
Tues								
Wed	9.0	9.0	1.2	9.1	1.5	1.3	1.6	1.5
Wed								
Thur	8.5	8.5	1.4	8.8	1.5	4.5	1.6	1.2
Thur								
Fri	9.1	9.1	1.4	9.6	1.4	4.6	1.5	1.2
Fri								
Sat	8.6	8.6	1.2	8.8	1.4	4.6	1.7	1.1
Sat								
AVG:	8.6	8.7	1.3	8.8		4.1	1.7	1.3